

Prices
from
£83,750

Whitehouse Park

Barrosa Way, Whitehouse Park, Milton Keynes, MK8 1LL

A brand new development of apartments and houses

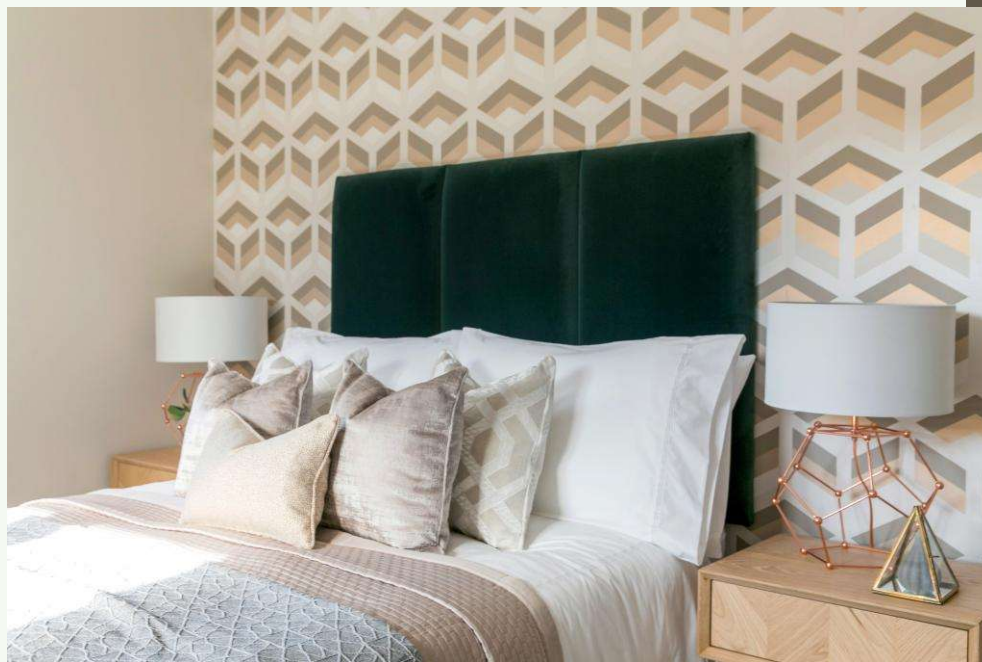
//// ParadigmLiving



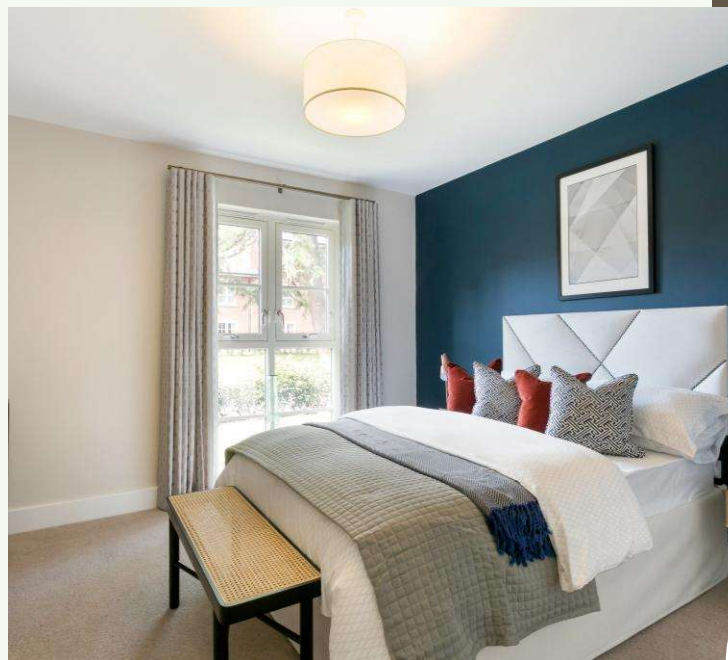
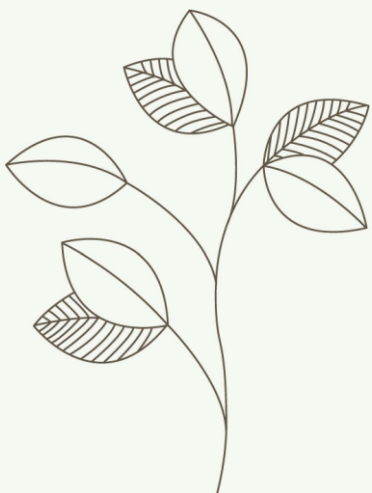
£ Prices from **£83,750 (25% share)**

% Share available **25%-70%**

🛏 **2 & 3 bedrooms**



We are pleased to offer these 2 and 3 bedroom houses available through Shared Ownership, located in Whitehouse Park, Milton Keynes.



Whitehouse Park KEY FEATURES

Bathroom suite and thermostatic shower

Carpet throughout living areas

Amtico flooring in kitchen, bathroom & downstairs toilet

Gas central heating

Allocated parking

Fitted kitchen with integrated oven and hob

Washer/dryer and fridge freezer

Enclosed Private Garden

These particulars do not constitute any part of an offer or contract. Any intended purchasers must satisfy themselves as to the correctness of each of the statements contained in these particulars. All floor layouts maybe subject to changes. The dimensions given on the plan are subject to minor variations intended for guidance only and are not be used for carpets, appliances or items of furniture.





Two Bedroom House

Plots 204, 205*, 206,
207*

(* handed)

KITCHEN/DINING

6'11" x 12'3" 2.13m x 3.74m

LIVING ROOM

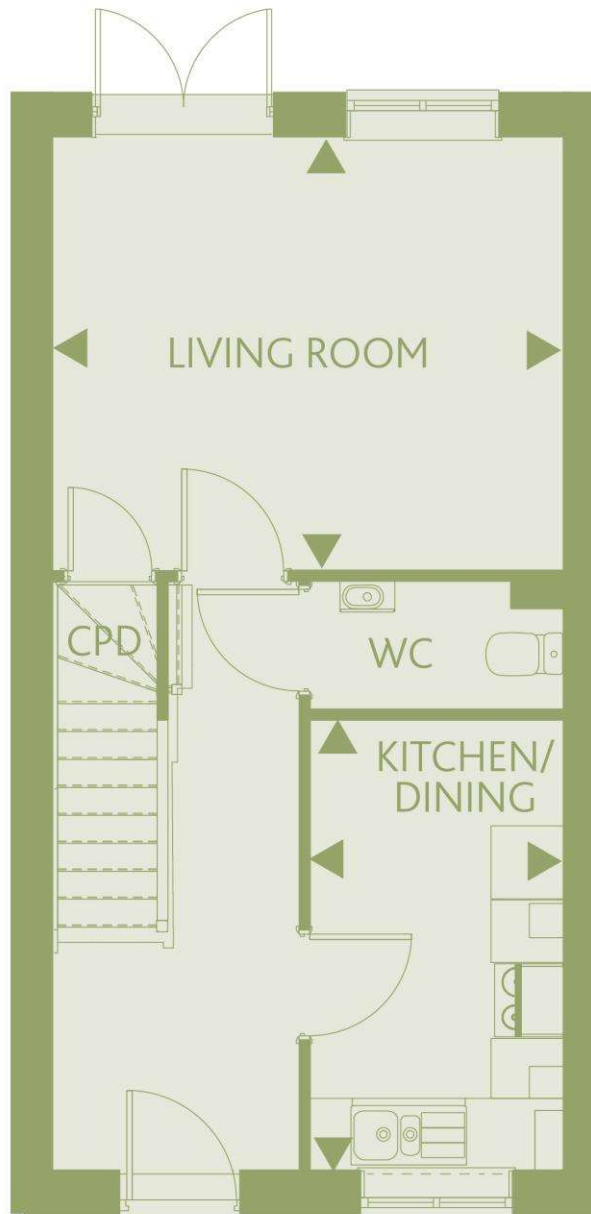
13'10" x 11'9" 4.24m x 3.60m

BEDROOM 1

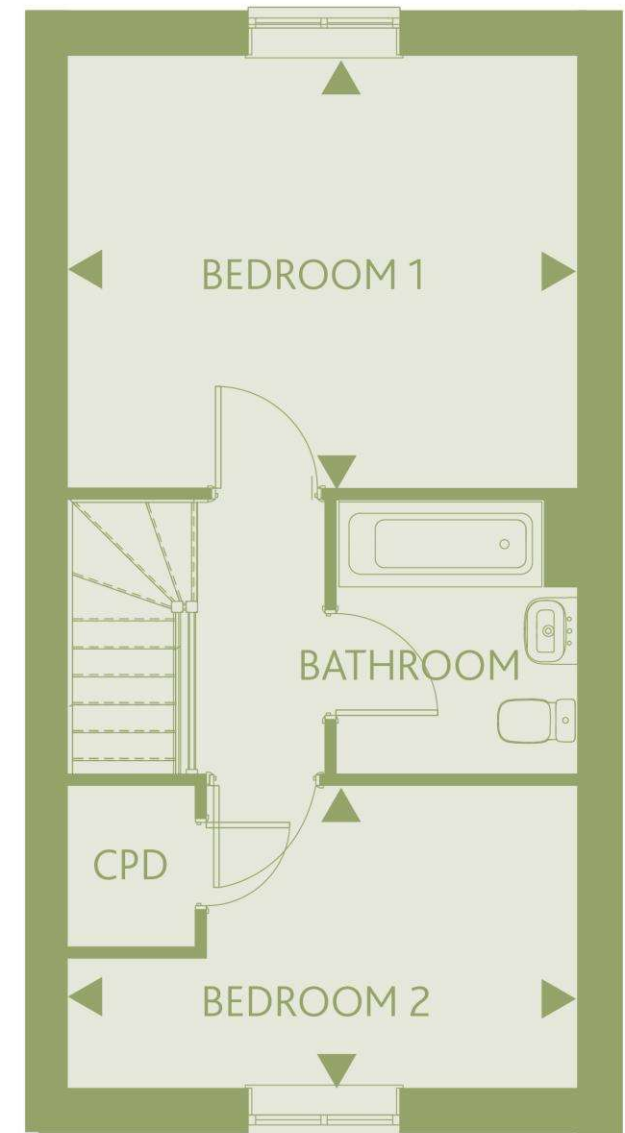
13'10" x 11'9" 4.24m x 3.60m

BEDROOM 2

13'10" x 8'3" 4.24m x 2.52m



GROUND FLOOR



FIRST FLOOR

These particulars do not constitute any part of an offer or contract. Any intended purchasers must satisfy themselves as to the correctness of each of the statements contained in these particulars. All floor layouts may be subject to changes. The dimensions given on the plan are subject to minor variations intended for guidance only and are not to be used for carpets, appliances or items of furniture.





Three Bedroom House

Plots 208, 209*, 210,
211*

(*handed)

KITCHEN/DINING

9'8" x 11'8" 2.95m x 3.57m

LIVING ROOM

16'6" x 11'0" 5.03m x 3.36m

BEDROOM 1

9'1" x 16'6" 2.77m x 5.04m

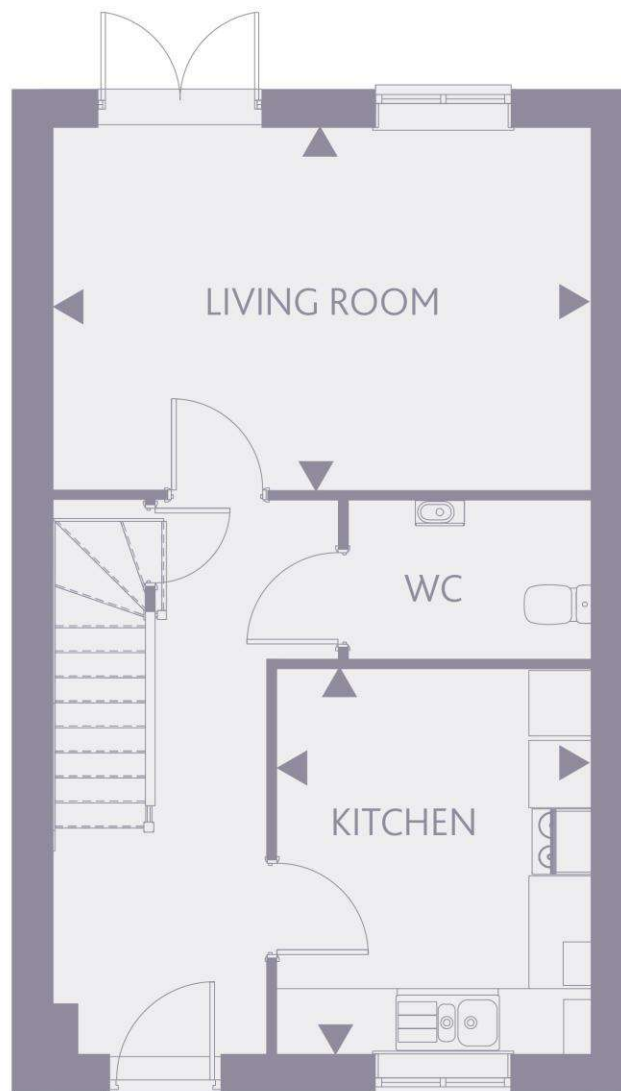
BEDROOM 2

9'1" x 11'3" 2.77m x 3.45m

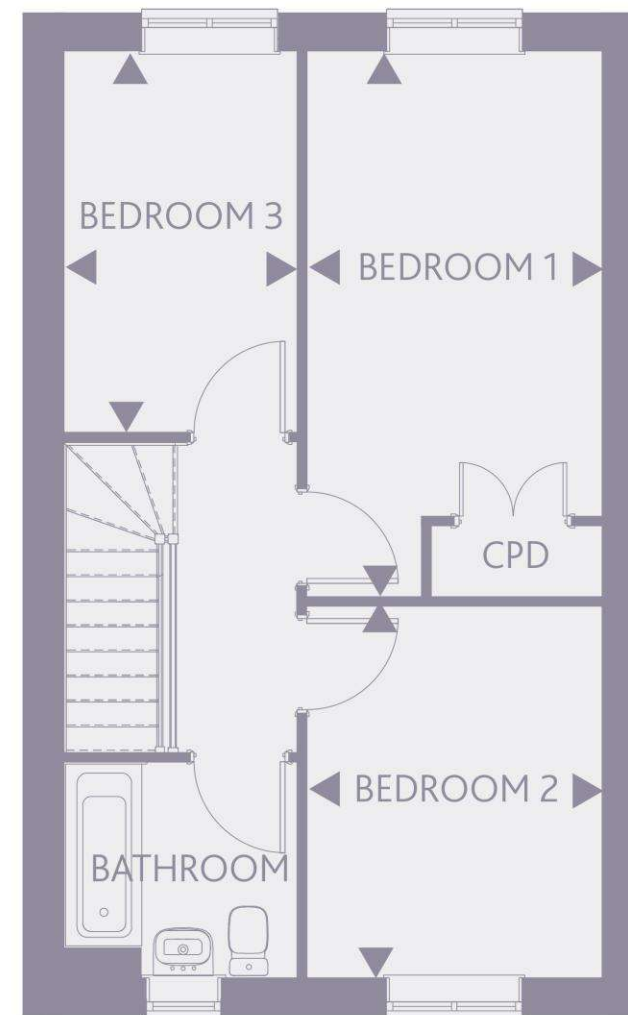
BEDROOM 3

7'1" x 11'6" 2.18m x 3.53m

These particulars do not constitute any part of an offer or contract. Any intended purchasers must satisfy themselves as to the correctness of each of the statements contained in these particulars. All floor layouts may be subject to changes. The dimensions given on the plan are subject to minor variations intended for guidance only and are not be used for carpets, appliances or items of furniture.



GROUND FLOOR

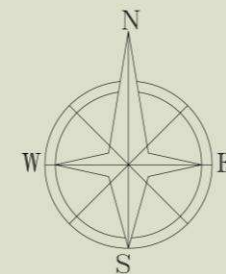


FIRST FLOOR





SITE PLAN



Rented properties



Shared ownership properties

These particulars do not constitute any part of an offer or contract. Any intended purchasers must satisfy themselves as to the correctness of each of the statements contained in these particulars. All floor layouts may be subject to changes. The dimensions given on the plan are subject to minor variations intended for guidance only and are not to be used for carpets, appliances or items of furniture.





For more information

0300 303 8046

www.paradigmliving.co.uk

These particulars do not constitute any part of an offer or contract. Any intended purchasers must satisfy themselves as to the correctness of each of the statements contained in these particulars. All floor layouts may be subject to changes. The dimensions given on the plan are subject to minor variations intended for guidance only and are not to be used for carpets, appliances or items of furniture.

